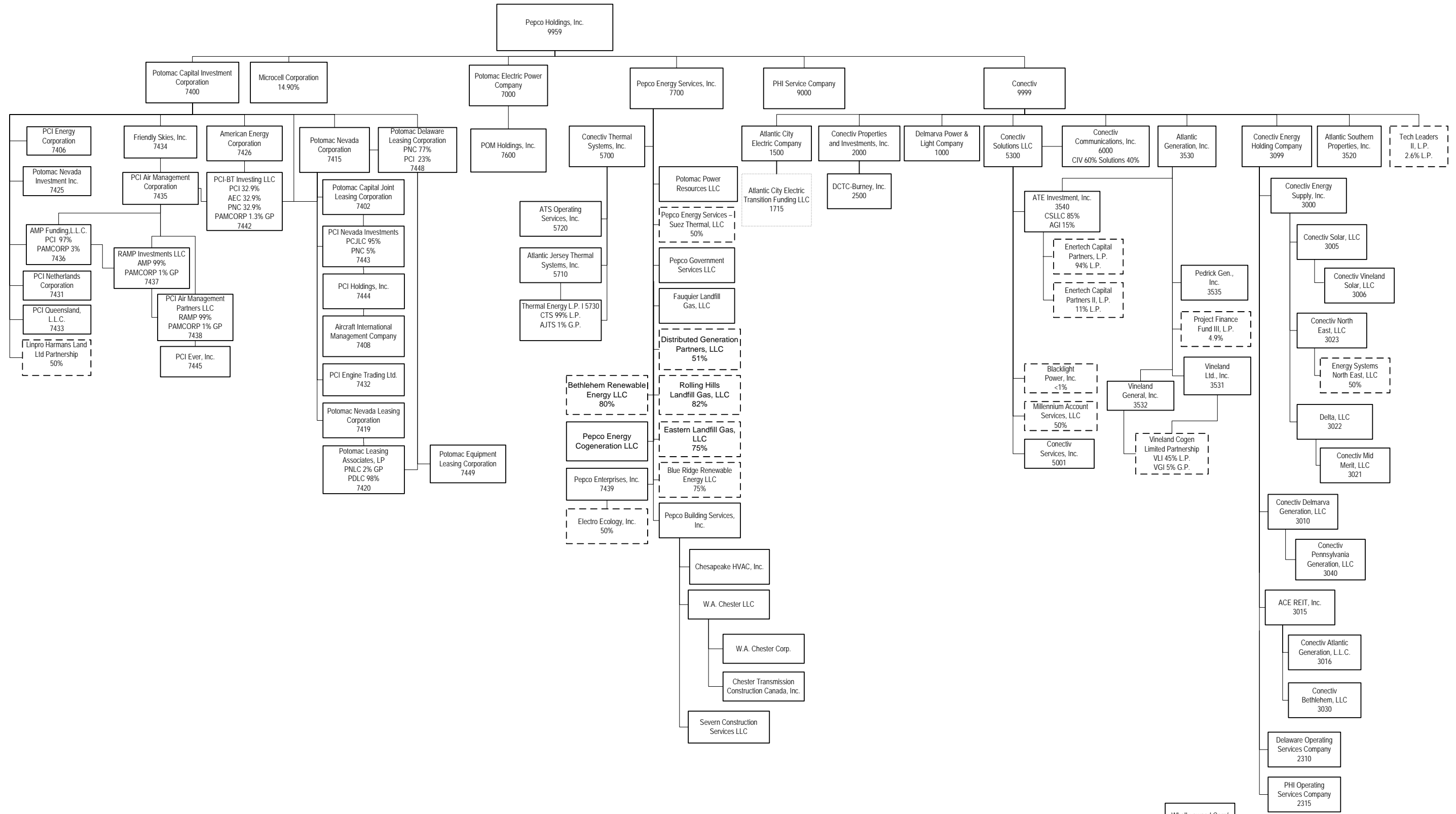


# Pepco Holdings, Inc. & Subsidiaries Corporate Organization Chart



Wholly-owned Corp/LLC/Partnership  
Partially-owned LLC/Partnership/J.V.  
Trust/Other

Ownership is 100% unless otherwise indicated.  
 The 4 digit number indicates the SAP Company Code.  
 Prepared by:  
 Michael Fortson  
 Legal Services - (302) 429-3180  
 Updated as of 9/30/09